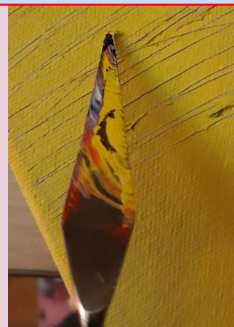


Mysterious

My first inspiration was *The Lover II* painted by a surrealist artist, Rene Magritte. He was known for his hallucinatory scenes, and disturbing juxtapositions. Many of Magritte's paintings featured similar imagery and themes of mystery to challenge the assumptions of human perception. My second inspiration was *The Kiss* created by an Expressionism artist, Edvard Munch. Expressionism is a style of painting in which an artist attempt to express emotional experience rather than the external world or reality. I combined these two art movements and applied it to my piece to create a disturbing scene that presents mystery emotions that reflect the theme of identity. Then, I did three different sketches using photographs that I took as my references.



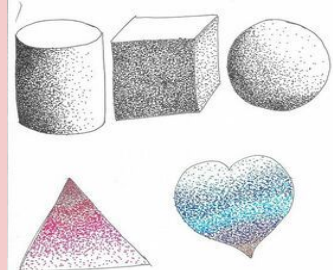
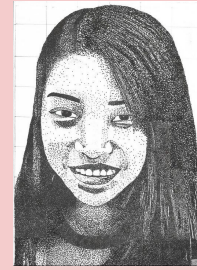
"The Lover II" by
Rene Magritte

I noticed that Edvard Munch paintings have thick outlines and small brushstrokes of lines. I experimented to achieve that small brush stroke of lines. First, I applied layers of paints on the canvas and let it dry, but not completely. Then, I used a palette knife to draw lines to make it seems like brush strokes. I am not sure if Edvard Munch uses a palette knife or a painting brush to achieve those lines.

To create this piece, I used the grid method to transfer my reference on the canvas to create an outline. After I transfer the image on the canvas, I applied various darker colors using thicker brushes to create thicker lines to emphasizes the expression. Primary colors and dark blue were used to contrast the mixed emotions that the image portrayed creating a disturbing scene inspired by Rene Magritte.



"The Kiss" by
Edvard Munch



Fight With A Smile

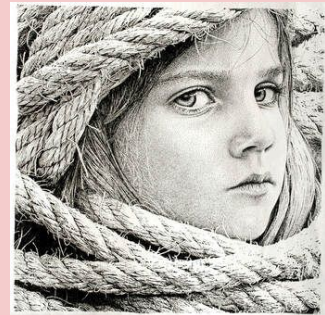
My first inspiration was *Untitled* created by Pablo Jurado Ruiz. He is a stippling artist and his work presented by portraits of great expressiveness and highly detailed. His concept focuses on human expression. My second inspiration was *A Sunday on La Grande Jatte* painted by Georges Seurat. This painting took more than two years to complete and is made up of millions of dots. Their artworks amazed me with their fine details and realistic images. I was inspired to use a stippling method for my artwork. I experimented with combining different colors using in to see if they banded.

For the process, I took a couple of reference pictures. Then, I printed the picture and lightly traced the outline on a white drawing paper. After that, I started stippling the center of my shirt because I was so excited to use different colors of ink. Next, I focused on the face. I wanted to capture every line and shadow on my face because this is a way to capture my expression. I was all over the place because I did not have the patience to do one thing for a long time. I could relate to both of my inspirations for this piece because it took me a long time to complete this artwork. Both pieces, *Fight With A Smile* and *Untitled* by Pablo Jurado Ruiz are portraits that capture human expression. Likewise, both *Fight With A Smile* and *A Sunday on La Grande Jatte* by Georges Seurat uses the stippling technique.

The main challenge that I face was time because stippling takes a lot of time which hurt my right hands. So, I had to work and then take a rest and repeat that pattern until I finish this project. I know I need to rest my hand to work efficiently.



"A Sunday on La Grande Jatte" by Georges Seurat



"Untitled" by Pablo Jurado Ruiz

Seurat, G. (n.d.). A Sunday on La Grande Jatte - 1884. Retrieved from <https://www.artic.edu/artworks/27992/a-sunday-on-la-grande-jatte-1884>

Artwork. (n.d.). Retrieved from <http://www.pablojuradoruiz.com/artwork.html>

Memories (Part One)

Memories is a series of my childhood based in Burma and Malaysia. A significant place or object is present to recall memories. Memories are based on experiences in our lives that helped shape us in a way. I applied the cherry blossoms and Petronas Twin Towers inspired by *Eight Scenes of Cherry Blossom: Hirosaki Castle* by Yoshida Hiroshi and a photograph of *Petronas Twin Towers Night* by Simon Clancy to represent the places. A block-print method is applied to produce this piece.



"Petronas Twin Towers Night" by Simon Clancy

"Memories"

The first sketch that I did was cherry blossom because this reminded me of my childhood in Chin, Burma. I remembered playing and hang out with my friends by cherry trees. I don't remember exactly the cherry blossom season. But, somehow, it brought me back to Christmas and New Year. I think cherry blossom is like a symbol that brings back my childhood memories.

This second sketch was Petronas twin towers in Kuala Lumpur, Malaysia. This tower is a landmark that brings back memories of my childhood in Malaysia. I thought this is a good object that could tell a little bit about my story. I looked up some images as references because I couldn't remember all the details of the towers.

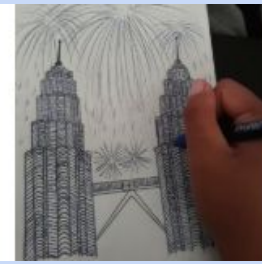
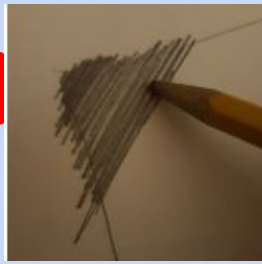
I did experimentation on the coating, the layers of the ink. I printed four for each print with different layers to see how many layers are good enough to have a presentable image. I preferred three to four layers of ink because it was visible on the paper with a balance of black and white.



"Eight Scenes of Cherry Blossom: Hirosaki Castle" by Yoshida Hiroshi

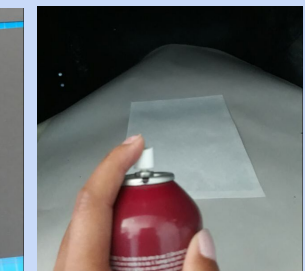
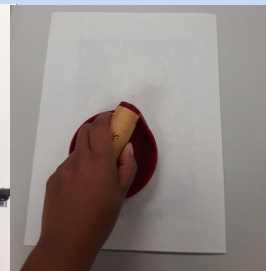
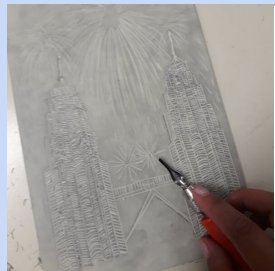


Memories (Part Two)



The first image that I sketch was cherry blossoms because it reminds me of my childhood in Burma. The next image is Petronas Twin towers in Kuala Lumpur, Malaysia, a famous landmark that reminds me of my childhood in Malaysia. Next, transfer the images to the linoleum by shading the back of an image using a pencil and pen and traced it. Then, start carving the image using a Speedball linoleum cutter. Use a very small-tipped knife for carving outlines and details. After that, put a small amount of ink onto an ink tray and rolled it out with a brayer to even out the layer. Then, transferred the ink to the block and rolled it out with a brayer to evenly spread the ink across the block. Put a little bit of pressure to let the paper sock in the ink and removed it slowly from the block and place it nicely on a drying rack to let it dry. While it dry, I cut a foam board using the reference that was provided with an X-Acto knife and a cork-back metal ruler. I made sure to lightly mark where things should be cut and place with a pencil. I then spread glue using spray glue on the back of the images and placed them on the foam boards.

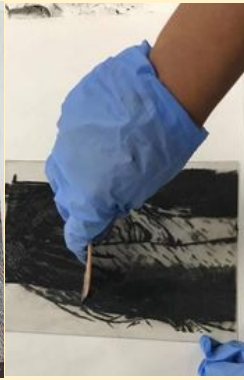
I am happy with the result of my final piece because it is clean, solid, and presentable. The process went smoothly because this is my second time making a block print. However, one challenge that I countered was placing the image straight and nicely on the foam board. To overcome this challenge, I applied less liquid spray and slowly placing the image on the foam board from the top corners. Another challenge was creating details because it took a lot of time to create a repetition of lines.



Two Faces

Two Faces was created based on how I view myself. It is essential for me to have two faces, one for myself and one for others. When these two different things are combined, it makes me a person that has a personality that becomes fit for everybody, not just my own self. It was inspired by *The Artist's Hand I* created by Henry Moore and *Self-Portrait in Bowler Hat* created by Max Beckmann. Drypoint printmaking was used to produce this piece.

To create this piece, place the Akua printmaking plate on top of the picture and tap around the corners so that it will stay in place. Then, began to apply cross-hatching to define every detail using the uline shape-blade knife. Next, place a paper inside a bucket filled with water and let it soak for eight minutes. Then, apply half a spoonful of Akua intaglio ink on to of the Akua printing plate and use the squeegee to spread the ink evenly across the plate. Make sure to spread the ink in every direction such as horizontally, vertically, and diagonally across the plate and use small pieces of paper to wipe out the extra ink on the plate. After that, place the plate on top of the printing press, place a wet paper on top of the plate, put down the fabric on top of the paper and continuously rolled the machine slowly. Then, take the cover off and let the paper dry. I experimented with different amounts of ink applied that had a huge impact on the visibility of the image. I produced several images to see what different layer of ink does to the image.



“Two Faces”

Dry Point Print

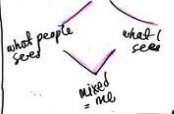
Inspiration
Max Beckmann (Self-Portrait in Bowler Hat)
Henry Moore (The Artist's Hand I)

Notes
Combination of these two images, play with the hand covering half of the face



IDEAS
• self-portrait
• hand covering my face
• I wanted to do something about me because I want my art to be related to my main theme which is "me"

PERSONALITIES



- American Flag
 - Two cultures
 - Being a woman
- Two Faces
private public

I can talk about how I practice these two cultures. Maybe it might be better to take picture of myself and use it as my main subject.

Silver and Gold

Best-friends are like silver and gold. This piece *Silver and Gold* is created based on my two best-friends, Bawi Len and Grady. They are people that I value, respect, love, and are genuinely important and special to me. It presents my definition of a best friend. It was inspired by *The Son of Man* by Rene Magritte, *Josephine Baker (III)* by Alexander Calder, and *Friends to keep you warm* by Izziyana Suhaimi. Rene Magritte applied an object to cover the face of the image, Alexander Calder used wire to create the figure, and Izziyana Suhaimi combined mixed media of embroidery and drawing. I applied the parts that I like from each of their pieces, and combined these pieces to create my artwork. Canvas, wire sculpture and hand embroidery were used to produce this piece.

"Silver and Gold"

Before I began my piece, I practiced hand embroidery. I did different patterns of stitches. I found out that there should be a balance between tightness and looseness of fabric to stitch. It was easier to stitch on cloth fabric than on canvas.



This copper wire experiment that I did before I began creating my final piece. I wanted to see if the wire could be bend, twist, and create variety of shapes. I ended up creating a flower using a black wire and a gold wire. I found out that I needed pliers to cut, and twist the wire because using my hands was not enough.

To create this piece, construct a frame and apply canvas. Next, create a figure outline using very thin copper wire. Then, apply more copper wire to the figures repeatedly to make them thicker and well constructed. After that, place the figures in the center of the canvas and began to stitch the outline with a needle and a red thread. Then, lightly draw various shapes using a pencil and start stitching. Canvas as a base is harder for embroidery because the gesso tightens the canvas. Make sure to wear rough gloves to prevent your fingers from poking yourself with the needle. Apply water drops using various watercolor and move the canvas around to let the water spread out.



Shovava. (2018, April 25). 19 Artists Creatively Pushing the Boundaries of Embroidery. Retrieved from <https://mymodernmet.com/embroidery-artists/>

"Friends to keep you warm"
Izziyana Suhaimi

Hope

Hope was created based on when my family and I settled in America seven years ago. This work defines why and how I am “hope” for my parents and myself in America. It was inspired by *The Son of Man* created by Rene Magritte and *Autumn Rhythm (Number 30)* made by Jackson Pollock. Rene Magritte's piece portray everyday objects and him being disturbing. His illogical situation is to startle the viewer. I applied his style of painting to startle the viewer. I used Adobe Photoshop CS6 to produce this image and applied Royal Langnickel paints for my background to represent my experiences and journeys during the past seven years of my life.

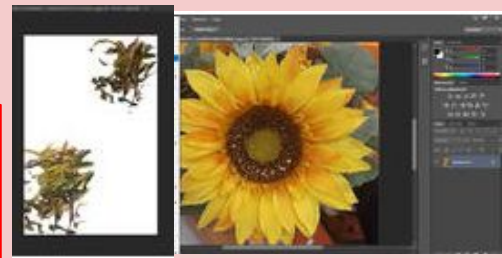
“Hope”

I wanted my background to be colorful, so I used variety of colors of paint to produce an art work inspired by *Autumn Rhythm (Number 30)* by Jackson Pollock. For my second experiment, I used the original image for my background but I "duplicated layer" to fill in the background. I mess around with the colors. At first, I did black and white and then used "photo filter" and changed the color to purple to give more vibration. Then, for the second layer, I added warmer tone to the skin by applying "vibrance".

"The Son of Man" Rene Magritte

The Son of Man by René Magritte – Facts & History about the Painting. (2013, July 17). Retrieved April 14, 2019, from <http://totallyhistory.com/the-son-of-man/>

Since, this was my first time using Photoshop, I had difficulties using the tools. However, I was able to create a piece that presents my life that no one know about and shows how some of the things about me such as my personality, perspectives, values and likes and dislikes hinds beneath something else. What you see outside is not everything. It was a success that my piece applies my main theme which is identity.



Lost in The Sea



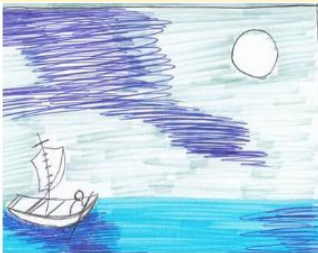
"Lost in The Sea"

Living a life is like staying on top of the water. Sometimes it seems hopeless because the end is invisible. We might feel alone, empty and ready to give up and drown. However, despite all the hardships, there is a land or a safe place on the other side of the invisible. Watercolor on paper is used to produce this piece.

My first inspiration was the *Tama River in Musashi Province* by Katsushika Hokusai. When I first saw this masterpiece, I have noticed the amount of negative space that is applied. The objects are not highly details, however, the balanced use of colors to create an object emphasizes the image to be more recognizable. I was inspired to paint an image that has a lot of negative spaces because it helps the audience to focus on any objects that are present. My second inspiration was *At Sea off Kazusa* by Katsushika Hokusai. I have noticed that applying negative space to the image is not necessarily a bad thing I find it calmer. I wanted to use different shades of blue to create a blue night sky in the middle of an ocean. I like the fact that using limited colors could create and emphasizes certain emotions.



The first sketch captured the emptiness and the isolation one has with the world, perhaps feeling lost and hopeless. The second sketch is very similar to the first sketch, however, the boat is more detail and the person on the boat is rowing the boat emphasizing hopefulness. I think we keep moving and trying in life because we have some kind of hope somewhere which drives us. I decided to use this sketch for my final piece. There are many challenges throughout the process. One example was wrinkling paper when using a great amount of water and the pieces of paper were coming out. I let the paper dry while placing paintbrushes on every corner to straighten the edges. Another challenge was the fact that it took time to dry and add layers of paint to get different shades of color to emphasizes the objects. However, there were many successes as well. One example is capturing an emotion of emptiness and loneliness with the use of the different shade of blue.



"Tama River in Musashi Province" by Katsushika Hokusai

Umbrella

We all need someone who will be outside in the storm with an umbrella just big enough to cover and protect us from the rain. We can also be that person with the umbrella. Inspired by *Couple Under One Umbrella* and *Rain Rustle* painted by Leonid Afremov. Leonid Afremov painted a romantic scene such as a couple walking to a park sharing an umbrella. An umbrella is a symbol for protecting, sharing, or accepting. I liked how the artist captures the mood, emotions, and use splashes of color and wide strokes. I wanted to capture the mood and the emotions of spending time with people that I love and care for. He applied impasto which is when he uses palette knives and oil paints to create a wet effect. Just like Leonid Afremov, I created the exact scene as him to focus on his technique. Acrylic paint and watercolor were used to create this piece.

I sketched some images to capture the romance scene showing how we all need someone in our lives and how we can also be that person for someone or ourselves.



"Umbrella"



"Rain Rustle" by
Leonid Afremov

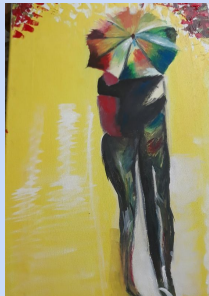


To create this piece, I made a canvas and applied gesso. Next, I lightly drew the figures with a pencil and I started to apply various colors to the canvas using the edge of a palette knife to create leaves. I added more layers to create texture. Then, I applied watercolors to give a rainy reflection of lights. Watercolor was easy to blend and dry. I made sure to use less water to make the color more visible.

One biggest challenge was creating layers of leaves with different colors using the palette knife. The colors tend to blend to create a muddy or dark brown color. It was better to let the paint dry and then add another layer of color to it. My favorite part of this piece would be the umbrella because the colors are bright, blended well and organized. I used watercolor for that because it was easier to blend on the canvas compared to Acrylic paint. If I could redo this piece, I would use oil paint because I want to achieve that glossy look just like Leonid Afremov's works.

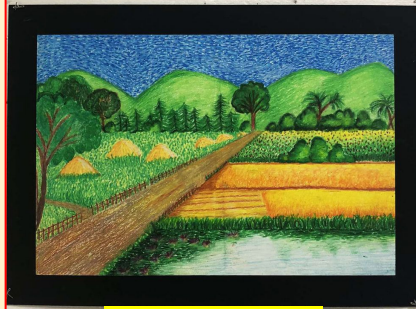


RAIN'S RUSTLE IN THE PARK - PALETTE KNIFE OIL
Painting On Canvas By Leonid Afremov.
(n.d.). Retrieved from
<https://afremov.com/rain-s-rustle-in-the-park.html>



Home is based on our environment. I believe each of us has the responsibility to take good care of our home because this is the only home that we will ever have. We should treat our environment the way it treats us. It also portrayed how I was raised back in Burma (Myanmar). I was inspired by *Starry Night* and *Wheat Field with Cypress* painted by Vincent van Gogh. The whole effect is dreamlike because of the swirling sky, and movement of a dab of color rolling with the clouds around the stars and moon. This painting inspired me to use oil pastels for my painting to create objects with lots of dab of color. I wanted my piece to affect dreamlike reality. I should use complementary colors, any two colors opposite each other on the color wheel, to create high contrast. This can be used to make something stand out. I had an idea of creating a cityscape. Another thing I like about this piece is the emotions or feelings that you get just by looking at the piece. I think it is achieved through the use of colors. Likewise, my piece will apply warm feelings or emotional effect because I want the audience to feel connected by nature. Oil pastel was used to create this piece.

Home



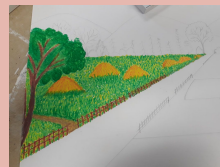
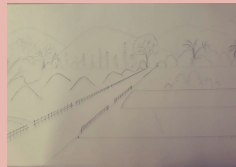
"Home"



"Wheat Field with Cypress"
by Vincent van Gogh

To create this piece, I lightly sketched an outline with a pencil because I did not want any visible pencil mark when I applied oil pastels over. I separated the image into four sections: the sky with mountains, the water, the right, and the left fields. I started with my left field with a huge tree and piles of rice. I used light brown, black and a little bit of white Pentel Oil Pastel for the trunk of the tree. Then, I applied dark green and light green for the leaves with a little bit of white for highlight. For the grass, I mixed light green and darker green with yellow. It is important to dab the colors achieve this dreamlike effect. Then, I moved on to the other sections. The process was similar to mixing colors and applied dark green and lighter green for the leaves with a little bit of yellow for highlight. I added black to create shadows.

My favorite part is the flower field which is on my right side of the piece because I used complementary colors which created contrast. One thing I learned about using oil pastels was that it is important to color lightly first to blend well. One thing I would change about this piece would be the sky because it is too bold or in one solid color. I would create movement by creating clouds that swirl to give a dreamlike effect.



The Best of Both Worlds



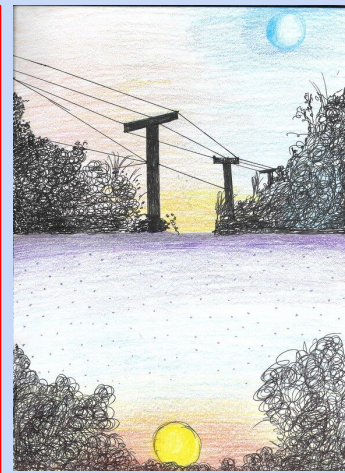
"The Best of Both Worlds"

The Best of Both Worlds is a combination of a beautiful sunset with a breathtaking night sky. This captured a moment when I am most calm and appreciate the beauty of nature. I believe nature is always a part of us and it is important to take good care of our environment. I was inspired by the *Empire of Light* created by Rene Magritte and *San Giorgio Maggiore at Dusk* by Claude Monet. *Empire of Light* by Rene Magritte is a combination of the darkness of the night and a daytime blue sky that creates a mysterious scene just like how I mixed an evening scene with a nighttime sky. Both watercolor and acrylic paints were used to produce this piece.

I started sketching images that I had in my mind. I wanted to combine two different elements to create a piece. So, I decided to paint a combination of an evening scene on the left side and a night sky on the right side of the canvas.

I did experimentation with watercolor. I found out that the more water I add to the color, the less visible the color is on the paper. This gave me an idea of using less water for this piece because watercolor might be even less visible on the canvas since I did not apply any base. One thing I love about watercolor as it is easy to blend them out and gives a soft touch to the image.

I enjoyed painting this piece because this kind of scene is something that I always wanted to paint. One main challenge was creating a straight line for the electric lines. I was frustrated because I had to fix the lines to make them straighter by adding more paints which made the shapes even more thicker. I decided to paint a white color to cover the black color so I could start over again. Then, I used tape to make straight lines and it works.



"Empire of Light" by
Rene Magritte



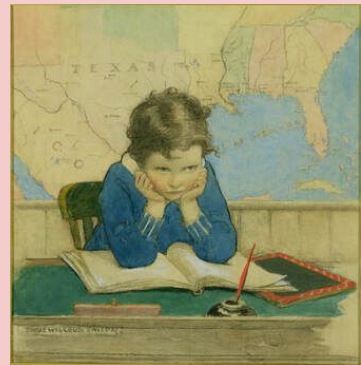
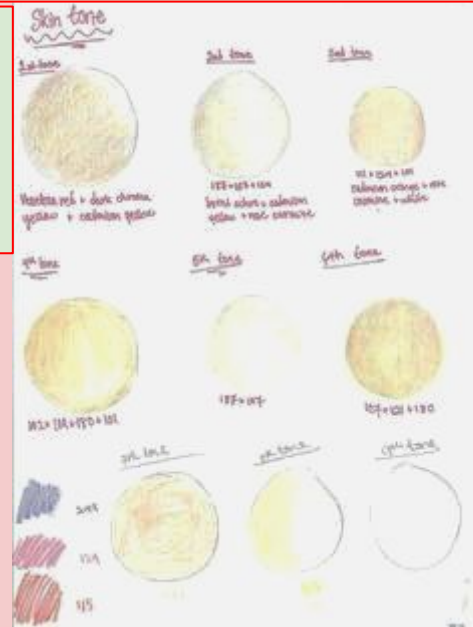
Empire of Light, 1950 by Rene Magritte. (n.d.). Retrieved from <https://www.renemagritte.org/empire-of-light.jsp>

Dead Brain

Dead Brain is based on how students heavily rely on technology to do their school work. They often take a short cut just to get things done instead of having a mindset or a desire to learn. There are negative impacts of technology on students because it takes away their ability to solve certain problems. This piece is inspired by *Back to School Again* and *The Scholar* created by Jessie Willcox Smith. Jessie Willcox Smith uses mostly little kids in many of her works. In *Back to School Again* and *The Scholar*, she portrays an opposite student, one who is daydreaming and the other who is focusing on school. She inspired me to focus on a student in a school for my piece. Faber-Castell color pencils and grid method were used to produce this artwork. Since drawing a big picture is not my strongest, I took a picture of my friend. I used this as my inference. I thought this will be easier for me to copy this image to the illustration board.

Dead Brain

The most challenging part of this piece was the facial features. I had to focus on blending to make the features more realistic. If I were to do this project again, I would practice more on drawing facial features to capture certain expressions. Overall, the purpose of this artwork is to show this generation relying mostly on technology for solving our schoolwork because we want an easy road instead of having a mindset or motivation to learn for a long term thing.



"Back to School Again"
by Jessie Willcox Smith



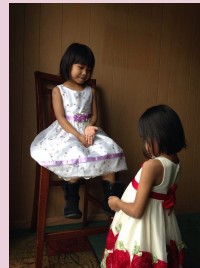
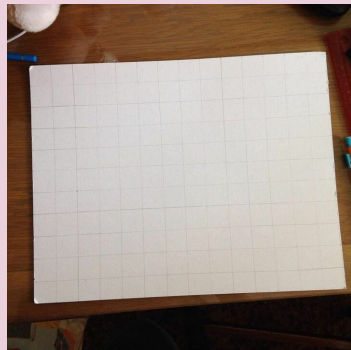
Sister's Love

Sister's Love is about an older sister helping her younger sister put on her shoes. It is very important in my family to take care of each other. The job of the eldest child is to help younger siblings. The purpose of this piece is to show the love that siblings have for each other. I was inspired by the *Good Housekeeping Cover* and *The Pink Bonnet* created by Jessie Wilcox Smith. Jessie Willcox Smith portrayed a mother helping a daughter putting on her clothes and this inspired me to create my six years old sister helping my four years old putting on her shoe. Faber-Castell color pencils and a grid method were used to produce this artwork.

I dressed up my younger sisters for a picture of this piece. Since drawing a big picture is not my strongest, I took a picture of my sisters. I used this as my inference. I thought this will be easier for me to transfer this image to the illustration board. I did an experiment on the skin tones. It was not easy because I could not create the exact skin tone that I want.

The most challenging part of this piece was the facial features. I had to focus on blending to make the features more realistic. If I were to do this project again, I will practice more on drawing facial features to capture certain expressions. Overall, the meaning behind this piece is very direct and clear. The audience will be able to tell that this piece is about helping each other.

"Sister's Love"



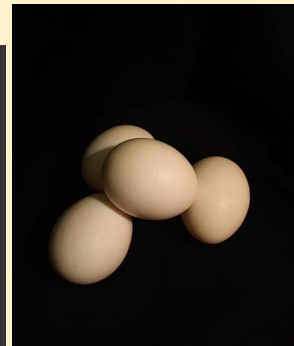
JESSIE WILLCOX SMITH: *The Pink Bonnet* (1907): Available for Sale. (n.d.). Retrieved from <https://www.artsy.net/artwork/jessie-willcox-smith-the-pink-bonnet>

"The Pink Bonnet"
by Jessie Willcox
Smith

Photographs

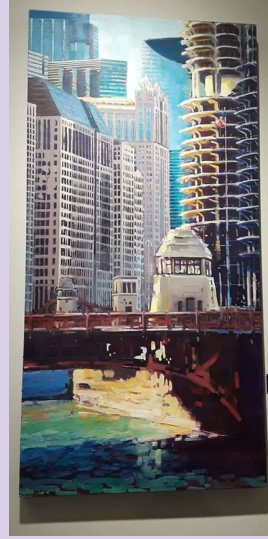
This summer, I photographed interesting things that I found around me. I captured moments, feelings and played with compositions, colors, values, patterns, etc. These images tell a lot about me such as things that I find interesting and like, places or objects that remind me of the past and the environment that I am in. I used Samsung J Galaxy to capture these photos and an Instagram editor and Snapchat filters to edit these images.

In these three sunset photographs, I experimented with different compositions. In the first image, I let the elements on the right side and left the left side negative. In the second image, the elements are in the center, there is an equal balance between negative and positive spaces. In the third image, there is more negative than positive space to emphasize the sunset. Another thing I experimented with was value. I used Instagram editors to edit these images. I applied a dark black background to capture just the object and its interaction with the light.



Photographs

Gallery visits



I visited several galleries such as Suite 104, Suite 130, 405 Sally Duback/Artist, Lily Pad Gallery West, OIL, a city gallery, Gallery 218, Sadler Gallery and so many more. I was mostly inspired by artworks at the OIL, city gallery. I saw the beautiful artworks of a cityscape in different compositions. I realized how beautiful or amazing buildings depends on how we see from a certain angle or composition. I was inspired to photograph cityscapes in different compositions to bring the best out of them. I also applied this technique for my landscape images. For example, instead of placing the buildings in the middle, I position myself to the side of the buildings to capture both the street and buildings to balance out the composition.

I also edited the images with an Instagram editor. I changed some of the lighting, brightness, and apply filters to contrast the colors. For example, I applied a Clarendon filter to the waterscape images because this filter brightens the light blue sky and darker blue water. everything seems much more bright and visible to the eyes.

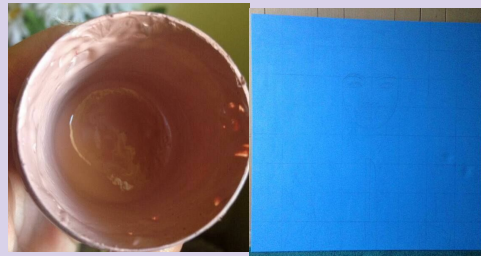
Self

Self is a self-portrait that is an acrylic painting on hand-stretched canvas. This piece portrays a theme of one's own identity. All these ups and downs in my life have made me who I am as a person. In life, there will always be good and bad times, however, it is my responsibility to encourage myself to keep going. This piece was inspired by *The Son of Man* by René Magritte and *The Kiss* by Edvard Munch. *The Son of Man* by René Magritte has an apple on his face and left the audience wondering just like him I applied flowers on my lips to attract the audience as well. *The Kiss* by Edvard Munch have thick outlines around the figures, and my piece also has that thick outlines around my figure.

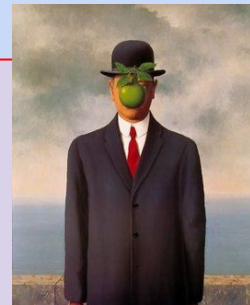
First, I took a picture of myself as a reference. I planned to use the grid method for this self-portrait so I can focus on a small portion at a time. Next, I had to create a skin tone which I did not know how to. I did some research and found out that red, yellow, blue, and white create a skin tone. I took my time mixing the colors to create my skin tone.



"Self"



To create this piece, I first created a canvas. I used the wooden stretchers to create the frame. I used a manual staple gun to staple the corners and used the hammer to secure them. Then, I added the canvas and stapled the edges and corners using the manual gun. I cut the extra edges with a scissor. After that, I applied one layer of thick gesso to the canvas and let it dry. Second, I drew square shapes to my image and transfer the image onto the canvas. It is important to lightly draw the image because I do not want the pencil marks to be visible when the paint is applied. Third, I painted the face first using the skin tone that I created during my experimentation. Painting facial features are very challenging because it took me three days to complete the face. Then, I moved onto the shirt and then, the background. I used thick lines with various colors for the background.



"The Son of Man" René Magritte

The Son of Man by René Magritte – Facts & History about the Painting. (2013, July 17). Retrieved April 14, 2019, from <http://totallyhistory.com/the-son-of-man/>

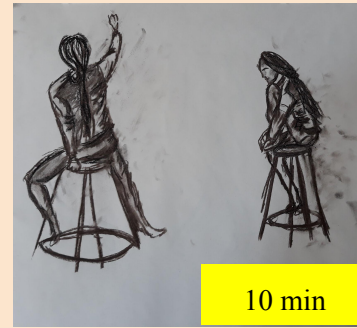
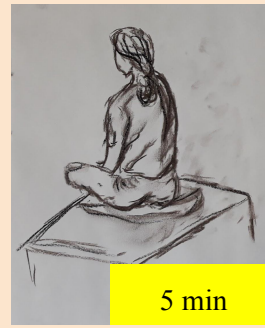
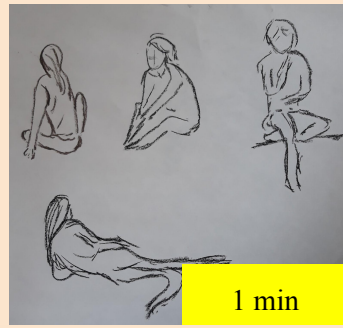
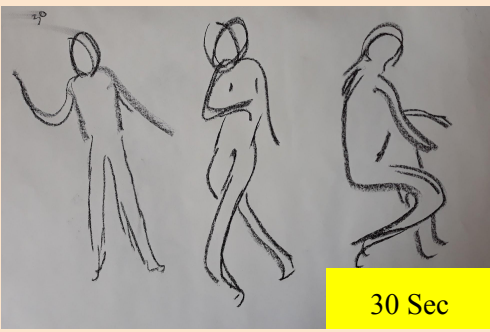
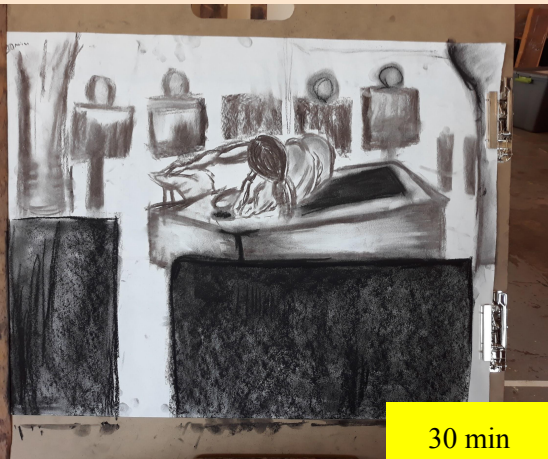


Figure Drawing

I took a class where I got to practice figure drawing and develop my skills with form through mediums. The drawing equipment provided to us challenged me to focus on depth and line with added value. We were given different types of charcoal. A model was brought in to experiment with movement, form, and value as the area and items such as a chair and the desk surrounding the model were played into the way we illustrated the model. Lighting affected how I presented shadows on the model and the model's change in poses showed off new ways the light impacted their body and the changes in lines of their form. The most difficult part when the drawing was interpreting wrinkles in clothes and facial features because they were details. I realized that I lack detailed background and features except for the 25 and 30 minutes session. These skills were applied to many of my paintings. I have access to various colors to display shade, depth, and lighting.



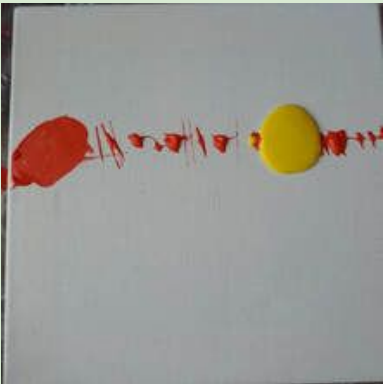
Imaginary

Imaginary was created based on my imagination of nature. This piece was mainly based on abstract art meaning that this does not try to represent an accurate image of a visual reality but instead uses colors and shapes to accomplish its effects. I was inspired by *San Giorgio Maggiore at Dusk*, 1908 by Claude Monet. I love how the audience can assume that unknowable objects as whatever they see or want. I want to apply different perspectives in my piece meaning the audience could create their own image. I was inspired to paint a sunset just like this piece to capture warmth, calm, and pleasure feelings that nature could provide. I was also inspired by abstract painting #0453 by Suraj Patel. This is an abstract landscape painting. I loved how simple and fewer colors are used to create this piece. Suraj Patel uses a palette knife and a fan brush to create most of his artworks. So, I was encouraged to experience these tools to create my piece.

Imaginary mainly focused on techniques used by Suraj Patel. He always put a large number of paints on the canvas and uses a palette knife to spread out and mix the paints. He also used a fan brush to create the trees. I applied these techniques to my painting. I think this is one of my favorite styles of painting because not only this is quick but also easy to learn.

“Imaginary”

Another technique that I used in this piece is paper. I crumbled paper creating wrinkles and circular shapes to create flowers. I dabbed the crumbled paper into the paint and dabbed it on the canvas to create flowers. Also, I found out that it is important to let the paint dry before adding different colors because they can smoke the background. One main challenge that I faced was using an uneven palette knife to blend the colors. However, I ended up loving the uneven layers of paints that create textures and an interesting mixture of colors.



Reagan School Flag Part One

DESIGNING A SCHOOL FLAG

Communication design

communicating a message using an image, words, etc.

Vexillology

the study of flags

FLAG

- simple
- well contrasted colors
- Attention grabber
- Bold



FLAG

- to identify
- to communicate
- to visually identify and to communicate without words

KEEP IT SIMPLE

- simple
- easy to reproduce
- easy to draw and to remember

SOUTH KOREA

- Harmony
- Balance
- Bold

Bengaladesh Flag

- The mingling of independent
- Have two strong colors

USE MEANINGFUL SYMBOLISM

- research
- able to describe everything
- carry meaning

BE DISTINCTIVE

OR RELATED

INCLUSIVITY AND CULTURE

COLOR THEORY

- Emotion
- to be seen
- Attention grabber
- high tone
- low tone
- medium tone

NO LETTERING OR SEALS

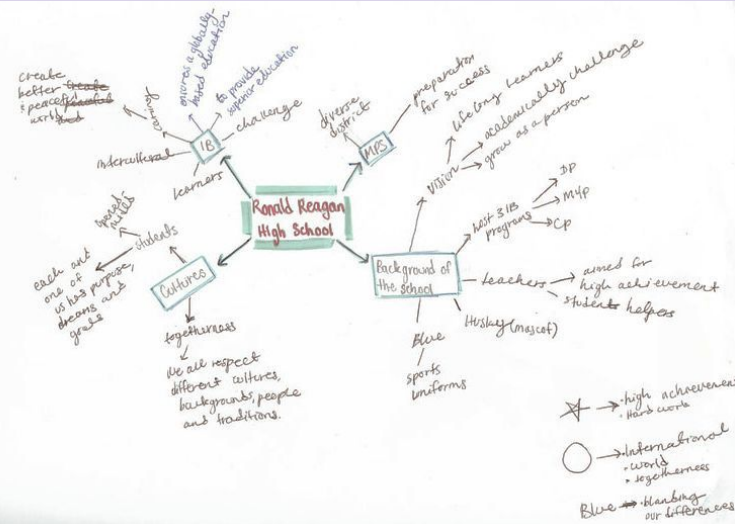
- difficult to see
- too small the color



Olympic Flag

Choose another Topic. (n.d.) Retrieved from

<https://georgiainfo.galileo.usg.edu/topics/history/article/fdrs.../olympic-flag>

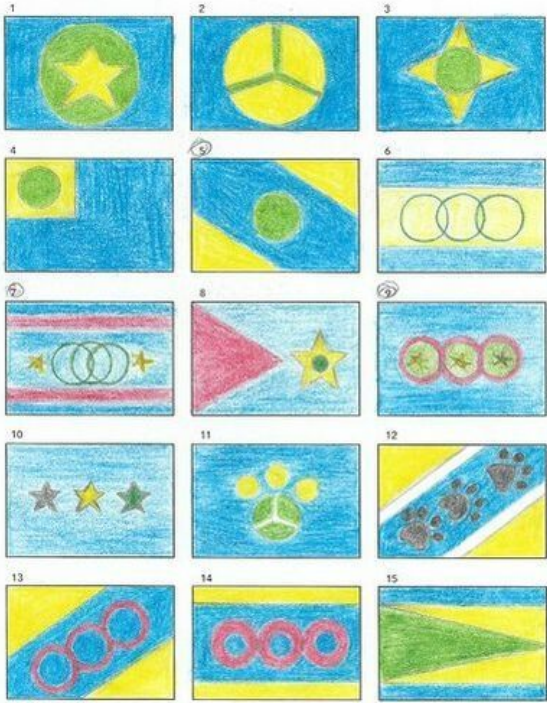


My definition of Reagan High School is home. Reagan is a place where a diversity of people, cultures, languages, beliefs, knowledge, perspectives, ideas, and backgrounds are united. This is inspired by the Olympic Flag, MPS and IB logos. This flag design was hand-drawn using colored pencils on paper.

This mind map that I created after researching MPS, IB and Reagan. Creating a mind map helped me to narrow down my thoughts, to focus on the main points, and have a better understanding of the topic.

This is a note that I took from the presentation about designing a school flag. I learned about the five basic principles of flag design. This presentation gave me an idea to create a basic and simple flag that could be reproduced by a five-year-old kid because I want a flag that we can easily see and memorize.

Reagan School Flag Part Two



I created similar fifteen designs with different positions, arrangements, and colors to see what is more appealing.

Blue

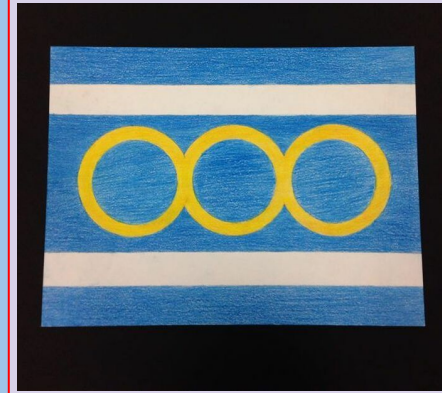
- Reagan, IB and MPS colors
- Blue is our school color that we are familiar with and I think this kinda blend out everything to create unity.

White parallel lines

- This is used as an equal sign to show that it is important to be equal at Reagan. Since Reagan is diverse, it is essential to make everyone feel welcome and fit in.

Yellow circles

- Each circle represents IB, MPS, and Reagan
- Reagan is made up of a variety of people, races, backgrounds, cultures, languages, different perspectives, ideas, thoughts, dreams, and goals. All circles are connected to show that they are all working together.



“Reagan School Flag”

I am happy with the final image because it is very simple and straightforward. Everyone can recreate this flag just by using their memories. This is successful because I only used three basic colors: blue, yellow and white. A little kid could look at this image for five seconds and reproduce it from their memory. The design of the flag is simple, use meaningful symbols, and no letters or seals are included. However, there were some challenges that I faced during this process. The first challenge that I faced was drawing perfect circles. I used a compass to help me to draw perfect circles and being patient is the key. Another challenge was cutting the board. Making a straight line while cutting the board with a knife was very difficult. I had to be patient and cut is slowly so the ruler doesn't move so much. If I could change one thing, I would re-cut the board because the edges are not perfectly straight.

My Chin Community #1 (Part One)



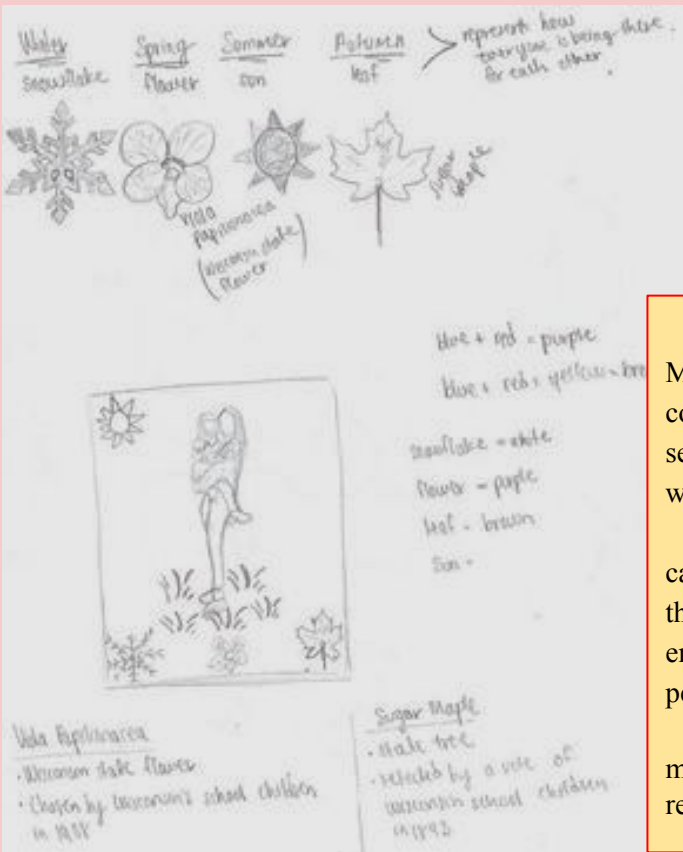
My Chin Community #1



"Family II" Fernando Botero



"Water Lilies" Claude Monet, 1906

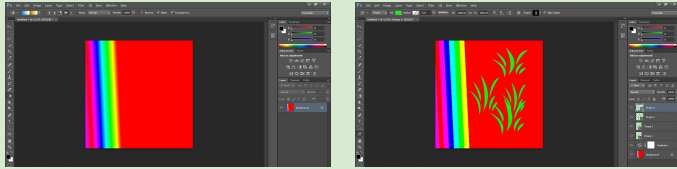


My Chin Community #1 was created based on the Chin community from my church in Milwaukee. This work defines my definition of community that I am currently living in. To me, community means togetherness, involvement in a group activity, help one another, work together, a sense of belonging and people sharing the same goal. Adobe Photoshop CS6 and silk screen printing were used to produce this piece.

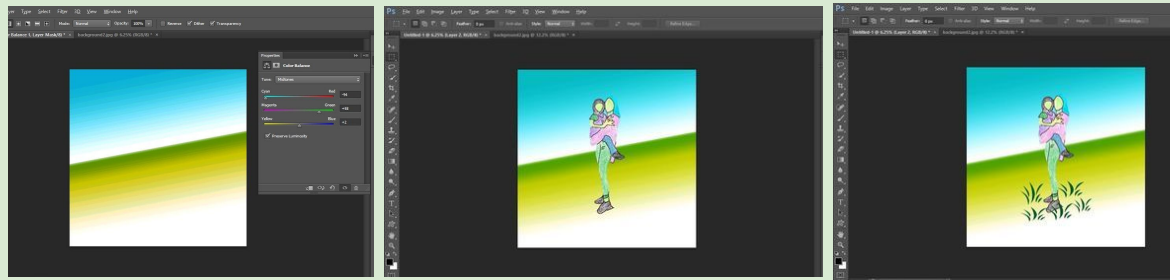
My first inspiration was *Water Lilies* painted by Claude Monet. After seeing this painting, I came up with an idea of including different seasons, and plants that represent Wisconsin to represent this Chin community is at Milwaukee, Wisconsin. I loved how Monet used cool colors in his piece emphasizing the peacefulness and the beauty of nature. I wanted to include cool colors to represent peacefulness, growth, liveliness, and the beauty of my Chin community.

The second inspiration was *Family II* created by Fernando Botero. I wanted to apply carrying my younger sister just like how the mother is carrying one of her child in Fernando's work. This could represent a community that is like a caring family.

My Chin Community #1 (Part Two)



I did some experiments using Adobe Photoshop CS6 to create different background colors. I used "Gradient Tool" and clicked on "Spectrum" from "Gradient Editor." This allowed me to make a rainbow for the background. Another thing that I experimented with was the hardness or the smoothness of the edges. I used the tool "Posterize" to change the edges of the lines. I could either make lines smooth or harsh by using this tool. I thought it would be cool to add something such as a grass to the red background. So, I clicked on "Custom Shape Tool" and selected the shape of the grass which they already provided in this program. Then, I filled them with a color that I wanted. I found it very difficult to use Adobe Photoshop CS6 because there was no images to show what the tools are for. I



To create this piece, I created a 36inx36in background canvas with 200 resolution using Adobe Photoshop. I clicked on the "Gradient Tool" to create the background. I changed the colors using "Color Balance" from "Properties." Next, I used the "Quick Selection Tool" to select the image that I wanted and clicked "Refine edge" to fix the edges and to make sure that I completely selected all the parts that I need. To apply grasses by my feet, I used the "Custom Shape Tool" to choose the grass shape and clicked on "Fill" to change the color to darker green. After printing my background, I started to draw the stencils using stencil papers and cut them all out. To apply this stencil to the piece, first, I taped all the edges of a stencil on top of the "screen frame" and then, flipped it to the backside. After that, I started to apply the color on the top part of the screen frame. and used "squeegee" to spread the paint back and forth and placed the screen frame on top of my background. I used the same "Squeegee" to spread the paint back and forth to let the paint soak into the paper. After that, I repeated the same process for the other stencils. Finally, I let the final piece dry by placing it on the floor.

Two main challenges that I faced during the process of using screen printing were lack of colors and spreading color in the wrong place. I did not know that I was supposed to just spread the color on the area where the paper covered. So, I made a mistake the first stencil that I did. However, I learned from that mistake and did better as I move on to do other stencils.

My Chin Community #2 (Part One)



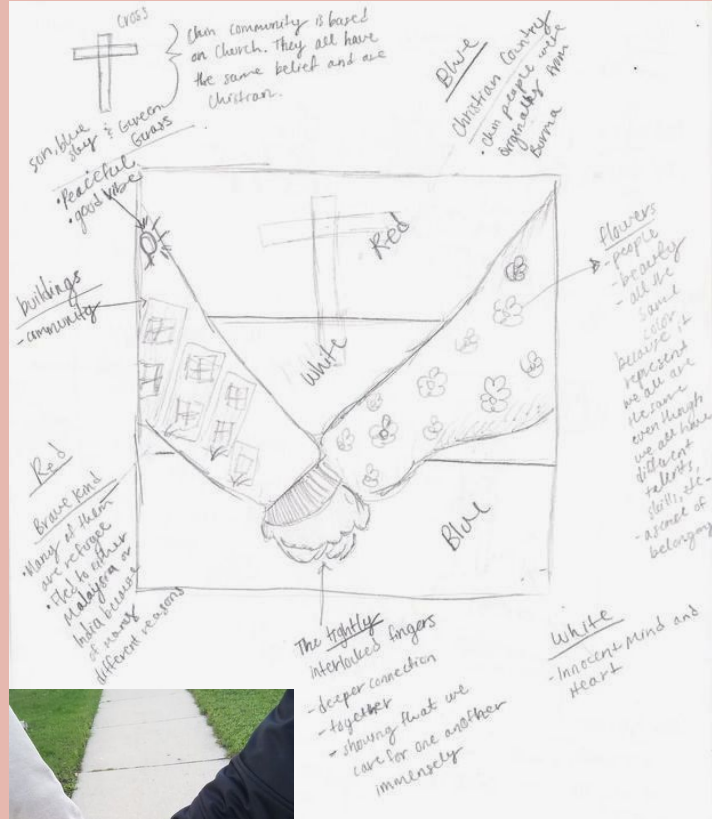
My Chin Community #2



"Baby is Three" Robyn Denny, 1960

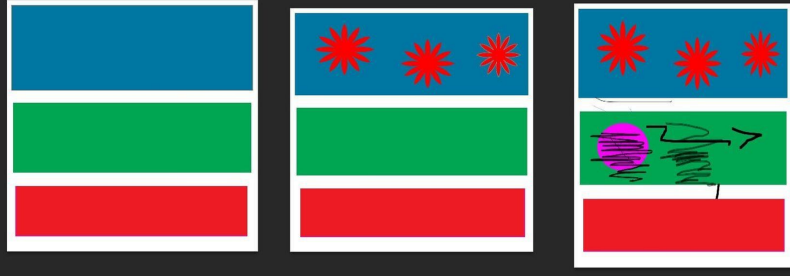


Chin Flag



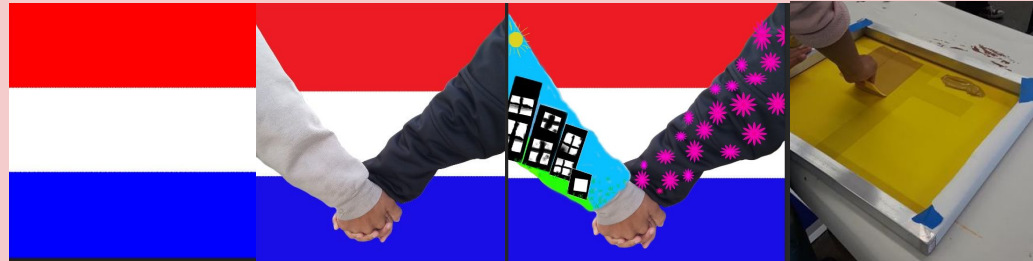
My Chin Community was created based on the Chin community from my church in Milwaukee. This work defines my definition of community that I am living in. For me, community means a group of people living in the same area, help one another, care about each other, feel like they belong, share common goals, interests and work together. Adobe Photoshop CS6 and silk screen printing were used to produce this piece. My first inspiration was *Baby is Three* by Robyn Denny. It is interesting how Color Field artists use the expressive power of the color while lacking the illustrations in their pieces. I wanted to apply a variety of colors that have meanings and relate to the theme of community. I came up with an idea of applying colors of Chin flag for my background: red, white and blue. You can tell a person or a community based on their flag. Presenting a flag could also encourage others to explore other people. My second inspiration was *Precious Things* created by Sophy Mariam. I really liked how Sophy used hands to hold flowers to emphasize that these flowers are precious to her. We tend to hold things that are precious or valuable to us just like Sophy's artwork. I came up with an idea of two people holding hands (the tightly interlocked fingers) to symbolize togetherness; people from my community feels they belong and considered one another as sisters and brothers.

My Chin Community #2 (Part Two)



Before I started to work on my background for my piece, I did some experiments using Adobe Photoshop CS6. I wanted to create a flag with three different colors. I created these rectangular shapes by using the "Rectangle Tool" to produce those shapes. Then I clicked on "Fill" to color them in. Another thing that I wanted to include for my piece is the same shape of flowers. I used the "Custom Shape Tool" to create the flower that they already have. I applied that flower and clicked on "Fill" to color in the shapes. I also wanted to use a brush just to fill in a shape or something. I used the "Brush Tool" to choose the brush tip that I want. I experimented with different types of brushes and sizes to see the differences and similarities. I just randomly played with the tools that I have never use and learned what kind of tools are available for me and could apply for my piece.

First, I created a 36inx36in background canvas with 200 resolution using Adobe Photoshop. I created three rectangular shapes using the "Rectangle Tool" and clicked on "Fill" to color each box with different colors. I also applied "Posterize" to smooth the edges of the rectangles to make them even. Next, I utilized the "Quick Selection Tool" to select the hands that I wanted and clicked "Refine edge" to fix the edges. Then, I applied rectangular shapes to create buildings using the "Rectangle Tool". After that, I added details such as windows and shadings using the "Brush Tool." I also applied this tool to draw the yellow sun, bright green grass, and the blue sky. I applied flowers on the right hand using the "Custom Shape Tool" and clicked on "Fill" to switch their color to hot pink. After printing my background, I started to draw the stencils using stencil papers and cut them all out. To apply this stencil to the piece, first, I taped all the edges of a stencil on top of the "screen frame" and then, flipped it to the backside. After that, I started to apply the color on the top part of the screen frame. and used "squeegee" to spread the paint back and forth and placed the screen frame on top of my background. I used the same "Squeegee" to spread the paint back and forth to let the paint soak into the paper. After that, I repeated the same process for the other stencils. Finally, I let the final piece dry by placing it on the floor.



Spending Time Together



“Spending Time Together”



"Rain Rustle" by Leonid Afremov

RAIN'S RUSTLE IN THE PARK - PALETTE KNIFE Oil Painting
On Canvas By Leonid Afremov. (n.d.). Retrieved from
<https://afremov.com/rain-s-rustle-in-the-park.html>

Life is too short, spend lots of time with people that you love and care for. This block print piece is based on my fear of losing someone that I love and care for. I think it is very important to spend lots of time together and show them that I care and blessed to have them in my life while I am the chance. It is essential to show someone that I appreciate them and happy to have them in my life. I was inspired by *Rain Rustle* and *Couple Under One Umbrella* by Leonid Afremov. I liked how the artist captures the mood, the emotions, and use splashes of color and wide strokes. I wanted to capture the mood and the emotions of spending time with people that you love and care for. However, since my piece is going to be black and white, I am going to aim for creating a romantic setting. This is because just using black and white limited the sense of roman and the magical setting.

I experimented with the different amounts of ink and pressure because the visibility of the image depends on these. I produced several prints to see what was the best amount of ink to apply for my final piece.

For the process, I sketched four different images and choose the best one for inference. Next, I transfer it to the linoleum by shading the back of an image using a pencil and traced it on the linoleum. This gives me an outline of where to carve. Then, I started to carve the image using a Speedball linoleum cutter with a small-tipped knife. After that, I put a small amount of ink onto an ink tray and rolled it out evenly with a brayer. I then applied around four layers of ink to the block and rolled it out with a brayer to evenly spread the ink. I placed a clean paper on top of the block and pressed it down with barren. Last but not least, I removed the paper slowly from the block and place it nicely on a drying rack to let it dry.

One thing that I do not like about this piece is the visible straight line that is in the middle which is an edge of the block. That line kinda makes the piece separated. This was due to using a smaller block.

